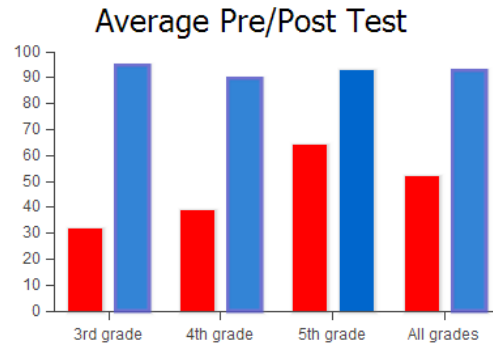


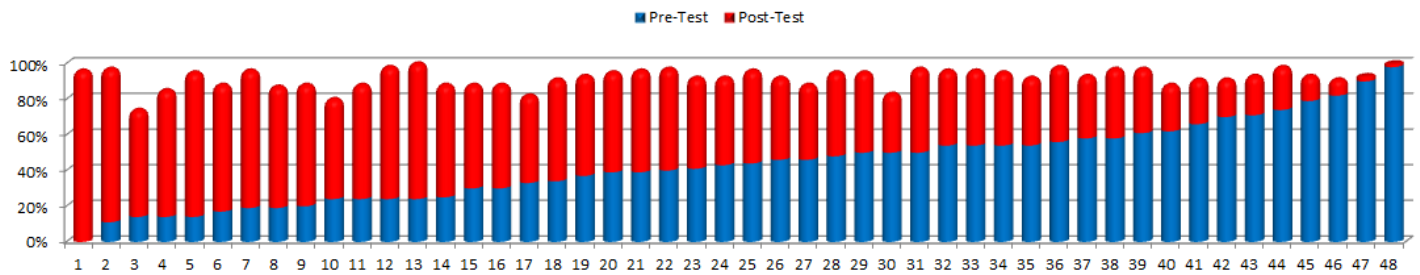
# Hawaii Public Schools—Big Brainz Case Study

'Ele 'ele Elementary School—Where every student is fluent now.

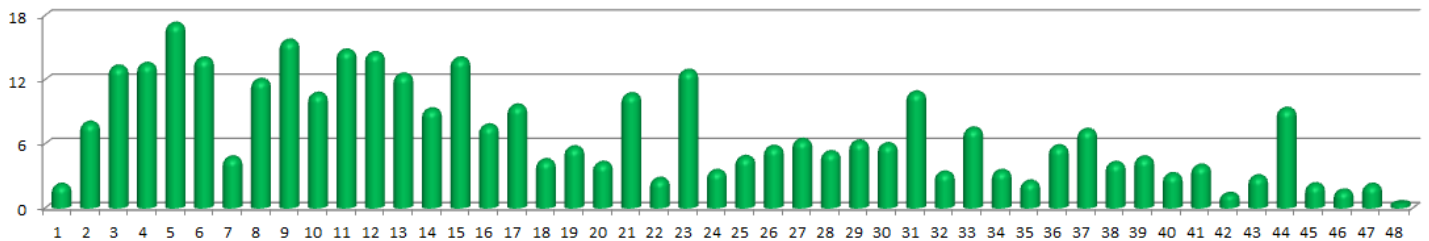


***"It's the great equalizer for our students, enabling all of them to become completely fluent, while simultaneously freeing up instruction time AND making it more effective."***  
***-Mr. Rose, Principal***

## Multiplication Fluency: 4th-Grade



## Hours Needed



## 5th-Grade

